

INFONET AS2 GATEWAY SERVICE

The Infonet AS2 Gateway Service

With the Infonet AS2 Gateway Service AS2 reaches a new level of interconnectivity and reach for EDI over Internet.

All users that trade via the Internet or communicate through IP Mail EDI/X.400 have AS2 within reach.

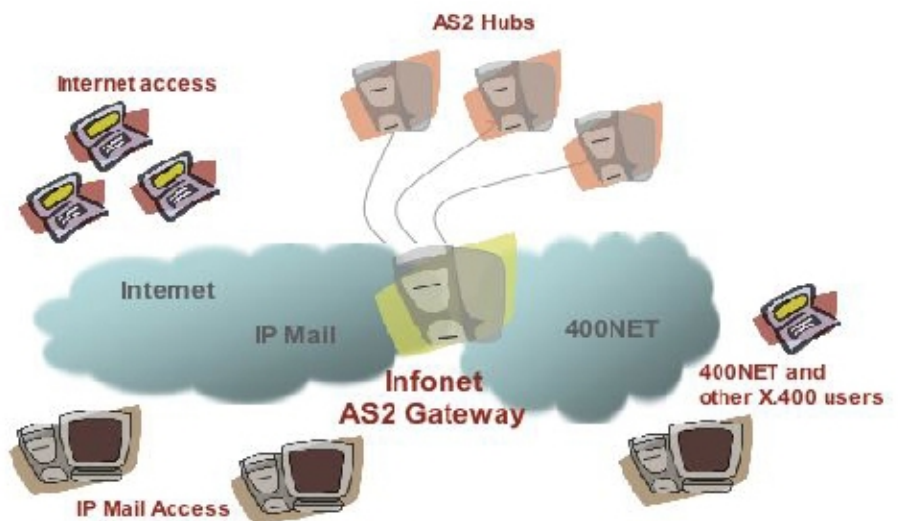
The only thing you need is the Infonet AS2 Gateway Service, which communicates with enterprise AS2 hubs.

AS2 (Applicability Statement 2) is a standard for real-time EDI based mime and http communications via the Internet.

It is peer-to-peer, meaning that users communicate directly with each other. With Infonet AS2 Gateway Service it is secure, encrypted and provides seamless integration between IP Mail EDI/X.400 service, Internet and AS2. Infonet eliminates the need for end-users of AS2 to build a complex ICT infrastructure, automation and security measures for communication over the Internet.

Infonet is the provider of 400NET and 400NET Messaging Service.

- >> Reliable
- >> 24 x 7 helpdesk
- >> Seamless communication (Internet, IP mail, X.400)
- >> Reduced operating and investment costs
- >> Eliminating the burden of implementation, maintenance and security of an internal system
- >> Secure and encrypted data communications
- >> 24/7 availability – monitored 24 hours a day by staff available to support all client needs



Costs

An installation fee of Euro 45 one-off.

A subscription for one connection to the Infonet AS2 Gateway costs Euro 12,50 per month.

Every following AS2 Gateway connection costs Euro 6,00 per month.

Traffic charges are Euro 0,25 per transaction (bi-directional through the gateway).

Contact

To order the Infonet AS2 Gateway Service contact Cadenzis at cadenzis@cadenzis.nl or find the Infonet distributors on www.cadenzis.nl/messaging.htm.



Cadenzis is responsible for channel management of the Infonet Messaging Services.

